

BRYAN ALON  
VOL. 1371, PG. 183

SHIRLEY D. PARK  
VOL. 1239, PG. 114

ARTHUR PARKER & WIFE  
FAVE PARKER  
VOL. 1439, PG. 0005

DEAN TINDALL & WIFE  
HELOA TINDALL  
VOL. 1111, PG. 394

DON BINGHAM  
VOL. 518, PG. 271

POINT OF BEGINNING  
MONUMENT  
53.78'

S11°41'25"E  
53.78'

SECTION 18  
F.M. 148  
CARROLL COUNTY, TEXAS  
VOL. 1819, PG. 327, 328, 329

S11°41'25"W  
53.78'

S44°27'30"E  
581.73'

DANIELS CORPORATION  
VOL. 02229, PG. 182

CHANNEL EASEMENT  
TEXAS HWY. DEPT.  
VOL. 4221, PG. 137

TERRI DON HARRIS  
VOL. 1724, PG. 585

SUBJECT TO EASEMENT  
TO CONSERVATION DISTRICT  
VOL. 0231, PG. 039

GARY MCQUIRE  
SUSAN MCQUIRE  
VOL. 1220, PG. 502

N45°00'00"W 2898.64'

EDWARD A. SPROCK  
WILLIE SPROCK  
VOL. 635, PG. 182

S45°00'00"W 470.00'

S22°27'19"W 245.89'

S89°19'23"E  
228.17'

S89°19'23"E  
228.17'

S45°00'00"W 90.00'

S45°00'00"W 947.65'

S45°00'00"W 947.65'

S45°00'00"W 947.65'

S45°00'00"W 947.65'

S45°00'00"E 1107.89'

S45°32'25"W 534.69'

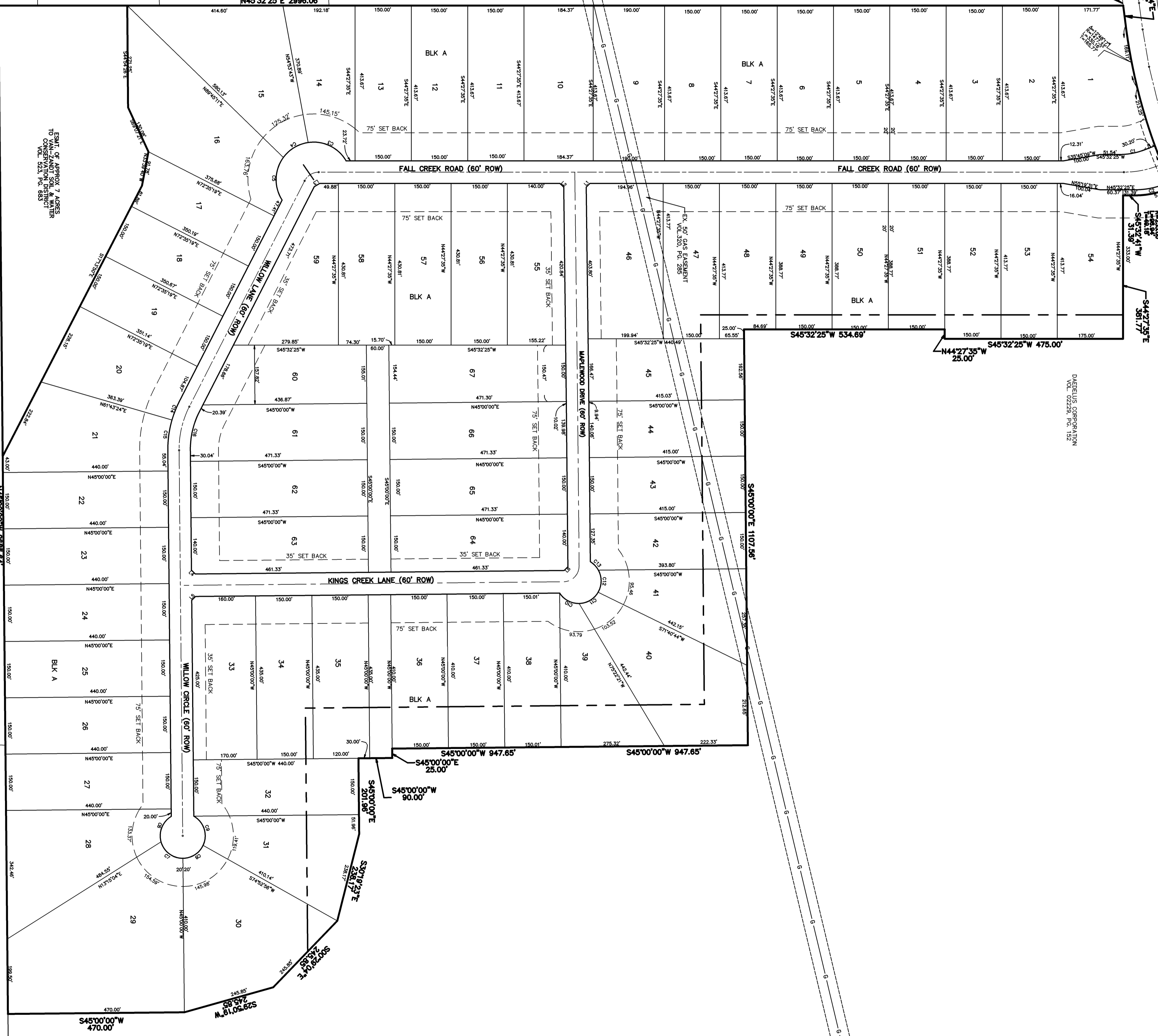
S45°32'25"W 475.00'

N44°27'35"W 25.00'

N45°32'25"E 2996.06'

N45°32'25"E 2996.06'

N45°32'25"E 2996.06'



EDWARD A. SPROCK  
WILLIE SPROCK  
VOL. 635, PG. 182